

Saugnac

Gauges

The only complete range of instruments for accurately measuring crack openings, variations and other deformations

R1 GAUGE

SMART REMOTE CRACKMETER



The R1 gauge is a connected crackmeter with 3 sensors :

- linear measurement (0.01 mm)
- temperature (0.1 °C)
- humidity (1% RH)

The R1 gauge is compact and ready to install, so you can monitor the progress of a crack remotely.

It takes just a few clicks to set up, with no need for computer skills.

E1 GAUGE

DIGITAL READING AND REMOVABLE CRACKMETER



Gauge mounted on plates during reading



Plates alone after reading

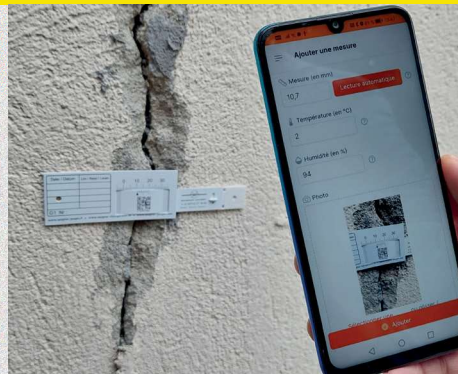
The E1 gauge is a removable gauge with a digital readout offering 0.01 mm resolution.

This measurement tool can be used to monitor **the development of cracks along one or two axes.**

When the measurement is taken, the E1 gauge is positioned in transparent plates. Once the reading has been taken, only the plates remain on the support.

G1 GAUGE

CRACK MONITOR FOR INSIDE AND OUTSIDE



The G1 gauge is a mechanical gauge with a **resolution of 0.1mm.**

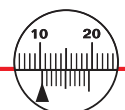
It is fixed by adhesive bonding using the technical adhesives supplied (effective bonding from -35°C to +90°C). Mechanical fixing possible.

Measurements can be read directly using the application supplied and a smartphone with a camera.

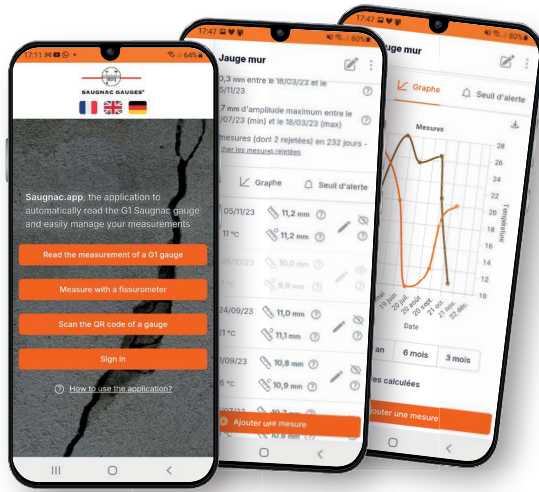
The device, the measurement, the know-how and the service too

SAUGNAC GAUGES

Tél. : +33 (0)9 62 07 18 68 - www.saugnac-gauges.com - info@saugnac-gauges.com



SAUGNAC®
The expert's brand



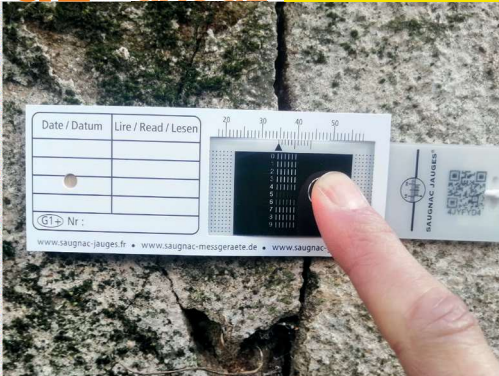
The application, available **free of charge** on smartphones and PCs, has been designed to **help experts collect, store and share measurements**.

Each Sagnac gauge is uniquely marked with a QR code and an identifier that enables the data to be stored in the cloud and the entire history to be retrieved by scanning the gauge's QR code.

The application offers a **wide range of functions**: automatic reading of G1 gauges, adding photos, managing alert thresholds, calculating expansion, downloading data in Excel format and time-stamped photos, customisable graphs, etc.

G1+ GAUGE

DIRECT READING CRACK MONITOR



The G1+ gauge is a mechanical gauge **with simplified direct reading**. It has a resolution of 0.05 mm.

Very easy to read, it can be installed indoors or outdoors using the same principles as the G1 gauge.

Measurements can be monitored using the application supplied.

G3 GAUGE

MISALIGNMENT MONITORING



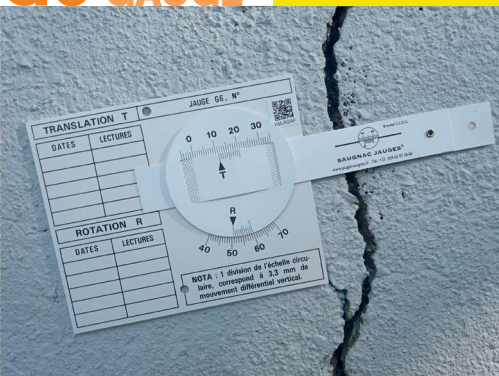
The G3 gauge measures changes in **horizontal or vertical displacement** between 2 structures

Measurement resolution is 0.1 mm corresponding to 0.2 mm of movement

The G3 can be fitted to any of its 5 faces, making it adaptable to any configuration

G6 GAUGE

TWO AXIS CRACK MONITORING



The G6 gauge is used to monitor a crack or deformation **with 2-axis displacement**: monitoring the evolution of the gap and shear in the same plane.

The gauge's resolution is 0.1 mm in translation and rotation (i.e. 0.1 mm horizontally and ~0.33 mm vertically).

X and Y measurements can be tracked and calculated using the free Sagnac.app application.

You can find our full catalogue on the internet at sagnac-gauges.com
One problem, one solution!